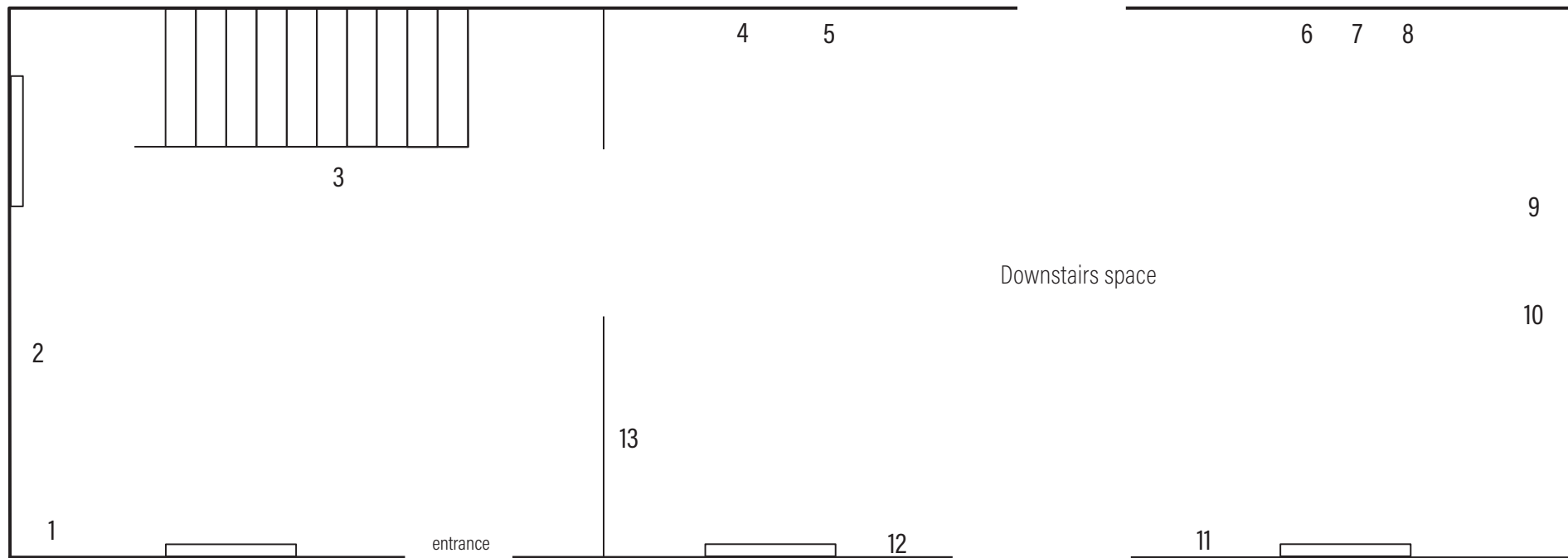


# BRYONY ROSE, LOVE BITES

## LOTTE GERTZ, LAYERS OF SILT

29.06 – 31.08.25

CAMPLE  
—LINE



### Lotte Gertz

- 1 **We have come to cover you with wool (orange)**  
2025, softground etching and watercolour on Japanese paper
- 2 **P. Somniferum (fragment of a bigger piece)**, 2025  
Relief print and gouache on mulberry paper

### Bryony Rose

- 3 **Untitled plan for *Love Bites***, 2025  
Ink, pencil, highlighter pen and Tipp-ex
- 4 **Blowball 1**, 2025  
Glazed ceramic
- 5 **Blowball 2**, 2025  
Glazed ceramic
- 6 **Biting Point 1**, 2025  
Glazed ceramic

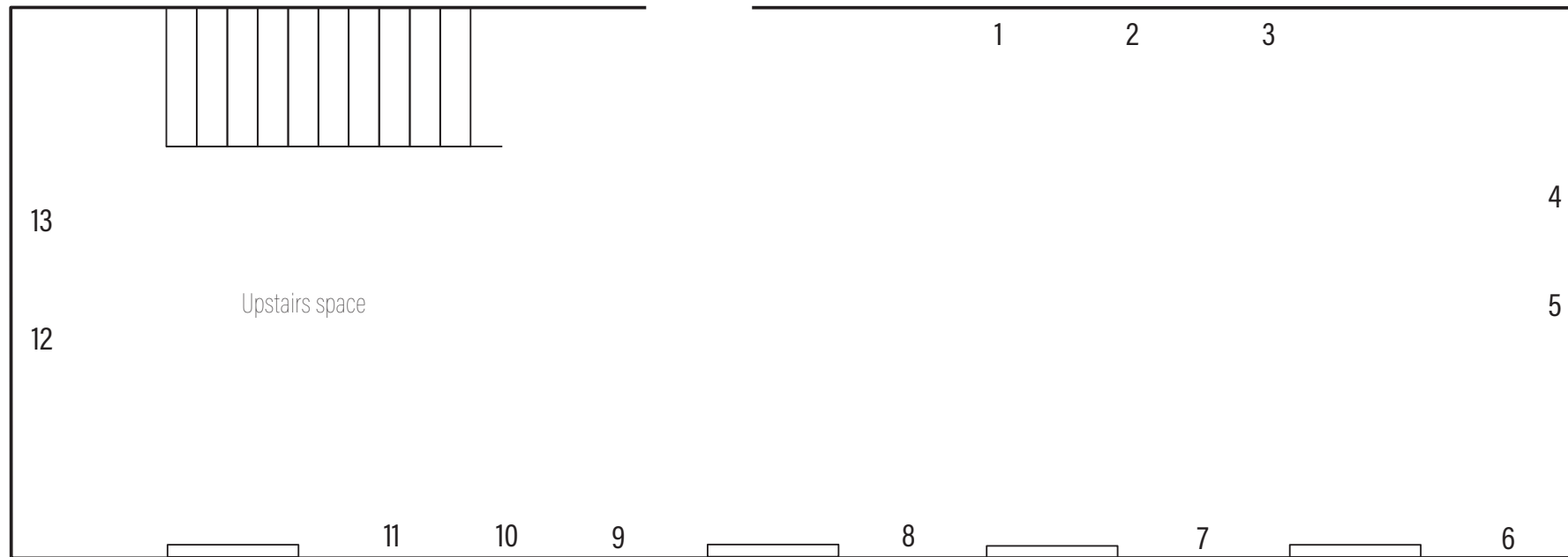
- 7 **Biting Point 4**, 2025  
Glazed ceramic
- 8 **Biting Point 2**, 2025  
Glazed ceramic
- 9 **Sucker 4**, 2025  
Glazed ceramic
- 10 **Sucker 3**, 2025  
Glazed ceramic

- 11 **Sucker 2**, 2025  
Glazed ceramic
- 12 **Sucker 1**, 2025  
Glazed ceramic
- 13 **Biting Point 3**, 2025  
Glazed ceramic

# LOTTE GERTZ: LAYERS OF SILT

29.06 – 31.08.25

CAMPLE  
—LINE



- |  |   |  |   |
|--|---|--|---|
| 1 <b>Landscape time, 2025</b><br>Relief print, acrylic, gouache<br>and collage on calico                       | 5 <b>Milk splash, 2025</b><br>Gouache and relief print on<br>mulberry paper   | 8 <b>Watching us, 2025</b><br>Softground etching on hahnemühle<br>paper                        | 12 <b>Children, compost, seedlings,<br/>2025</b><br>Relief print and gouache<br>on mulberry paper |
| 2 <b>We have come to cover<br/>you with wool (pink), 2025</b><br>Gouache and relief print<br>on mulberry paper | 6 <b>The Mountains holding<br/>themselves up, 2025</b><br>Acrylic on cotton   | 9 <b>Pain relief with torn cloth, 2025</b><br>Softground etching<br>on hahnemühle paper        | 13 <b>Repair, 2025</b><br>Stone lithograph and watercolour<br>on mulberry paper                   |
| 3 <b>Seedheads, 2025, gouache and<br/>relief print on mulberry paper</b>                                       | 7 <b>At the bottom of the river<br/>holding still, 2025</b><br>Gouache, relief ink and<br>softground etching on mulberry<br>paper | 10 <b>We have come to cover you with wool,<br/>2025</b><br>Softground etching on awagami paper |   |
| 4 <b>Caregiving as resistance, 2025</b><br>Gouache and relief print<br>on mulberry paper                       | 11 <b>Seahorses with pregnant male, 2025</b><br>Softground etching and aquatint on<br>hahnemühle paper                            |  |   |